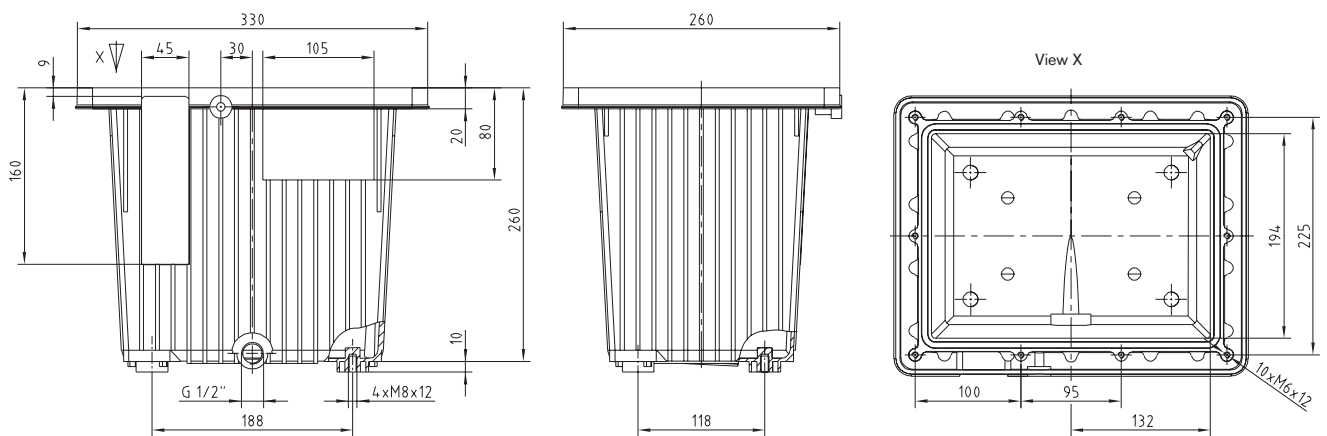


Tank with oil collecting groove

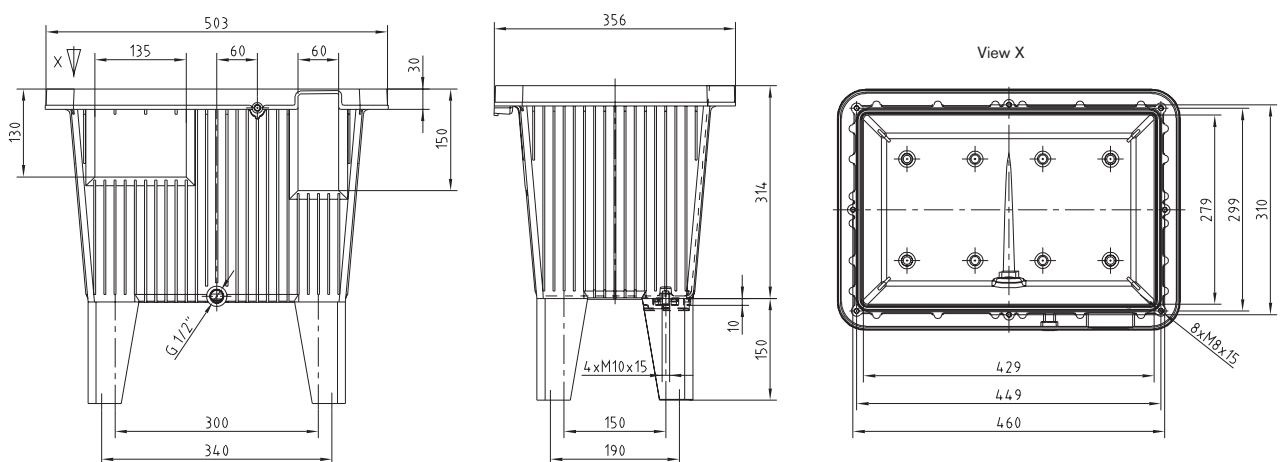


Tank with oil collecting groove BAK 13



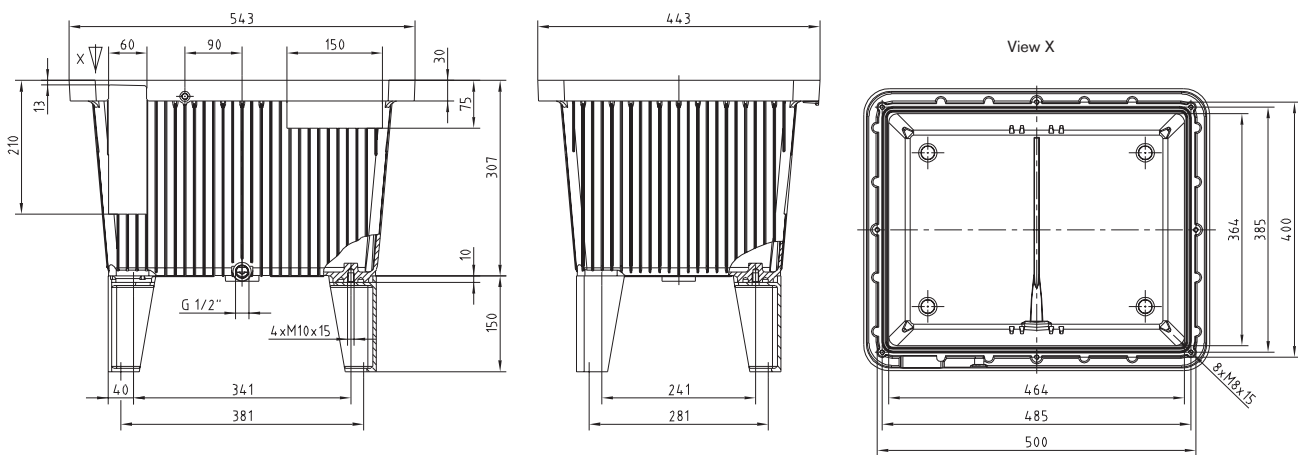
Effective volume	Gasket	Tightening torque of drain plug	Max. media temperature	Max. permissible pressure
11,5 L	RS 13 NBR	G1/2" = 80 Nm	100 °C	0,5 bar

Tank with oil collecting groove BAK 30



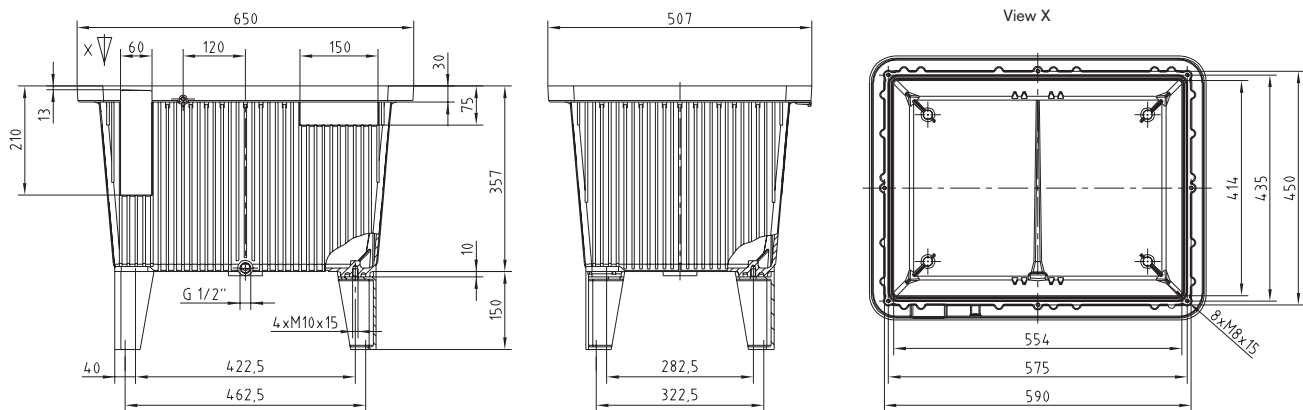
Effective volume	Gasket	Tightening torque of drain plug	Max. media temperature	Max. permissible pressure
27,0 L	RS 30 NBR	G1/2" = 80 Nm	100 °C	0,5 bar

Tank with oil collecting groove BAK 44



Effective volume	Gasket	Tightening torque of drain plug	Max. media temperature	Max. permissible pressure
40 L	RS 40/44 NBR	G1/2" = 80 Nm	100 °C	0,5 bar

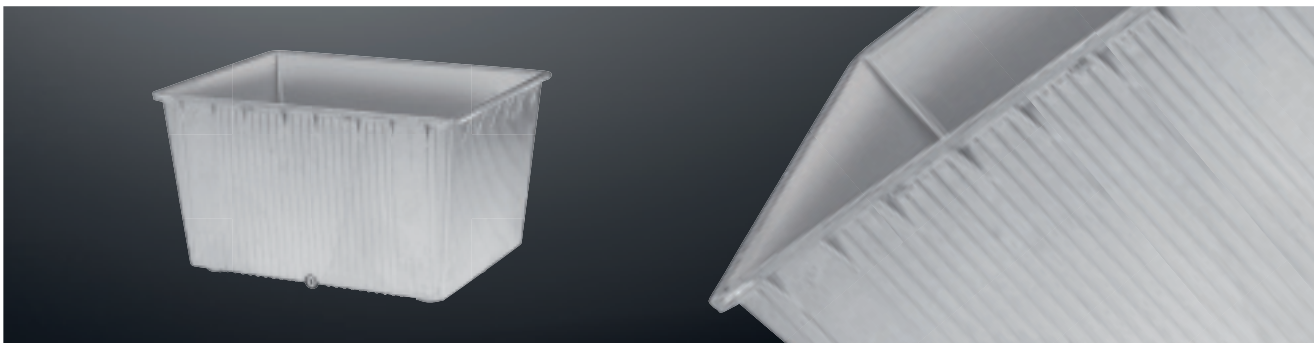
Tank with oil collecting groove BAK 70



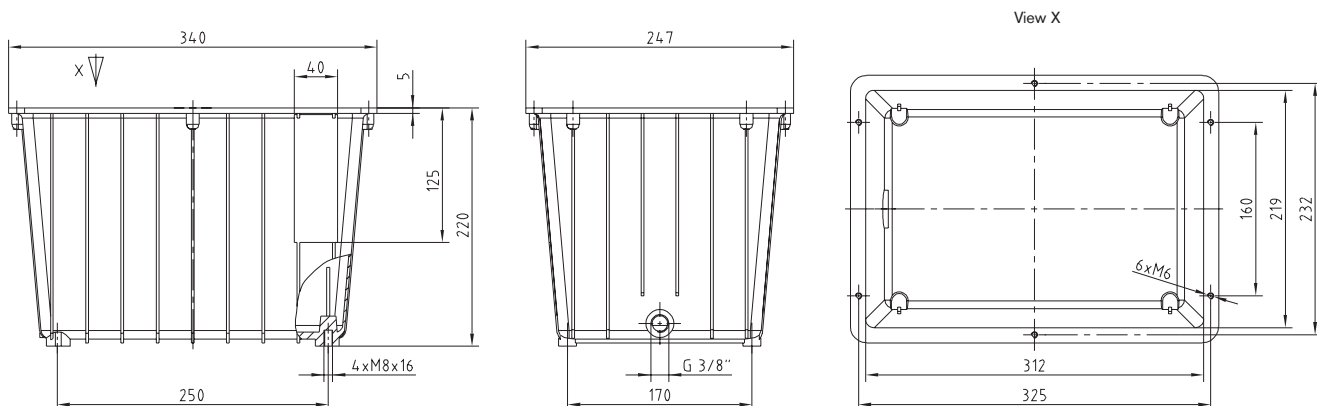
Effective volume	Gasket	Tightening torque of drain plug	Max. media temperature	Max. permissible pressure
63 L	RS 63/70 NBR	G1/2" = 80 Nm	100 °C	0,5 bar

ALUMINIUM TANK TYPE BAK HYDRAULIC COMPONENTS

Tank without oil collecting groove

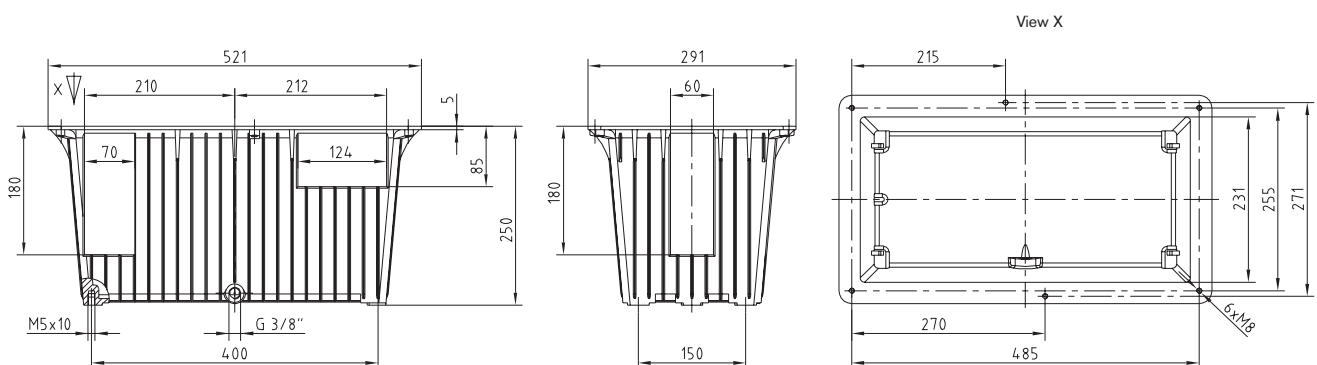


Tank without oil collecting groove BAK 10



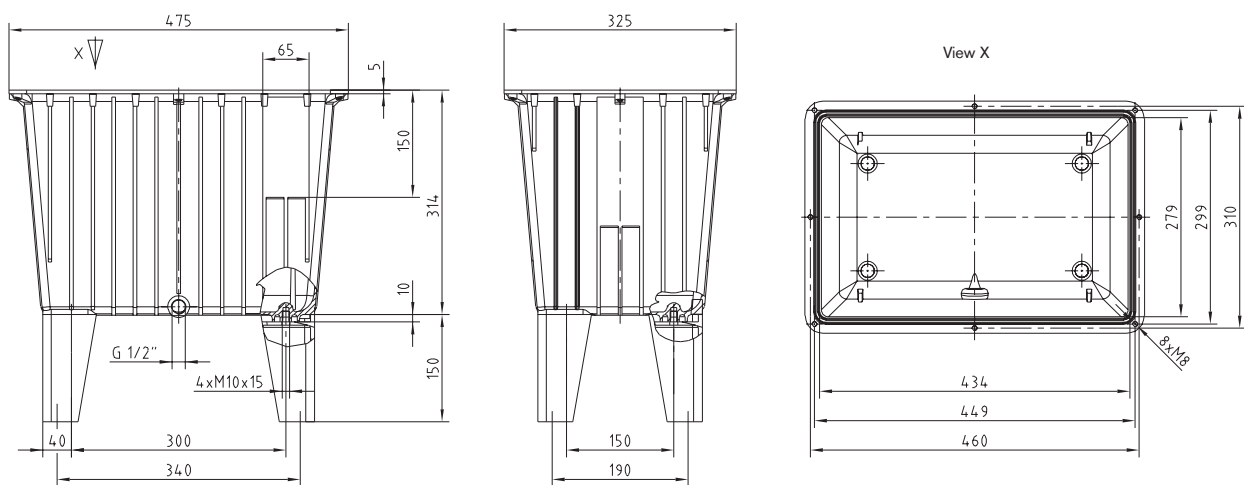
Effective volume	Gasket	Tightening torque of drain plug	Max. media temperature	Max. permissible pressure
9,5 L	FD 10	G3/8" = 50 Nm	100 °C	0,5 bar

Tank without oil collecting groove BAK 20



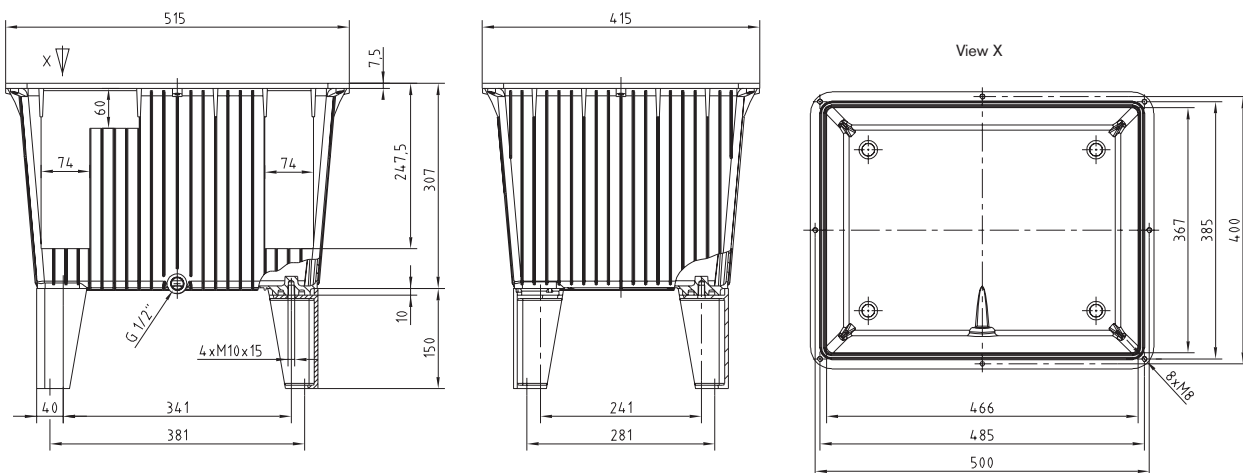
Effective volume	Gasket	Tightening torque of drain plug	Max. media temperature	Max. permissible pressure
18 L	FD 20	G3/8" = 50 Nm	100 °C	0,5 bar

Tank without oil collecting groove BAK 27



Effective volume	Gasket	Tightening torque of drain plug	Max. media temperature	Max. permissible pressure
27 L	RS 30 NBR	G1/2" = 80 Nm	100 °C	0,5 bar

Tank without oil collecting groove BAK 40

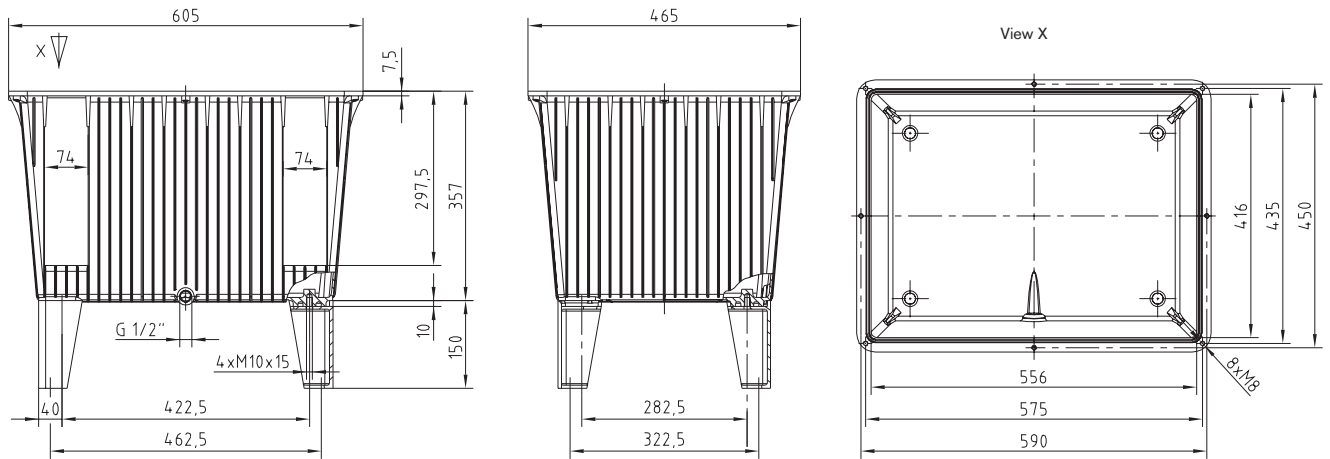


Effective volume	Gasket	Tightening torque of drain plug	Max. media temperature	Max. permissible pressure
40 L	RS 40/44 NBR	G1/2" = 80 Nm	100 °C	0,5 bar

ALUMINIUM TANK TYPE BAK HYDRAULIC COMPONENTS

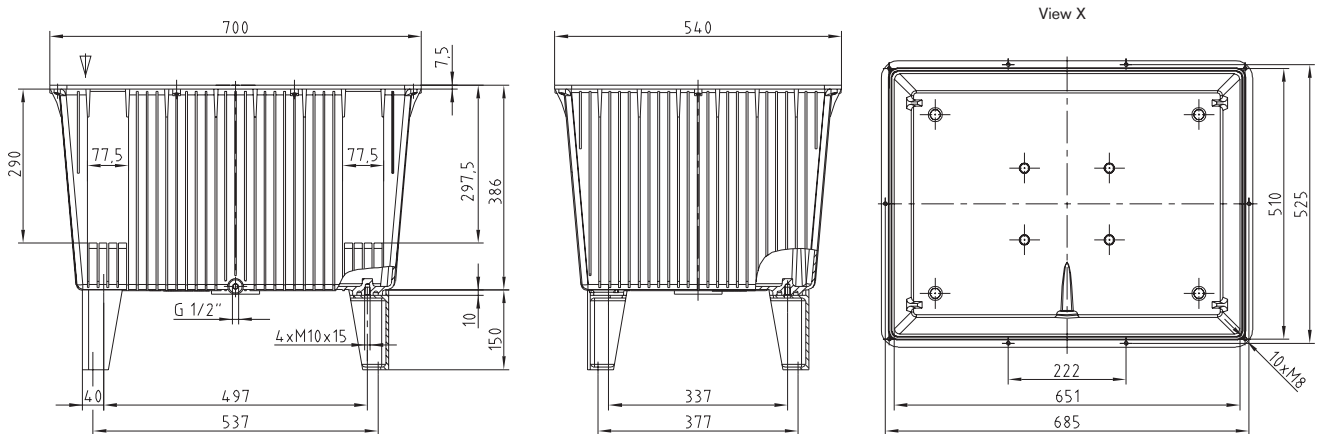
Tank without oil collecting groove

BAK 63

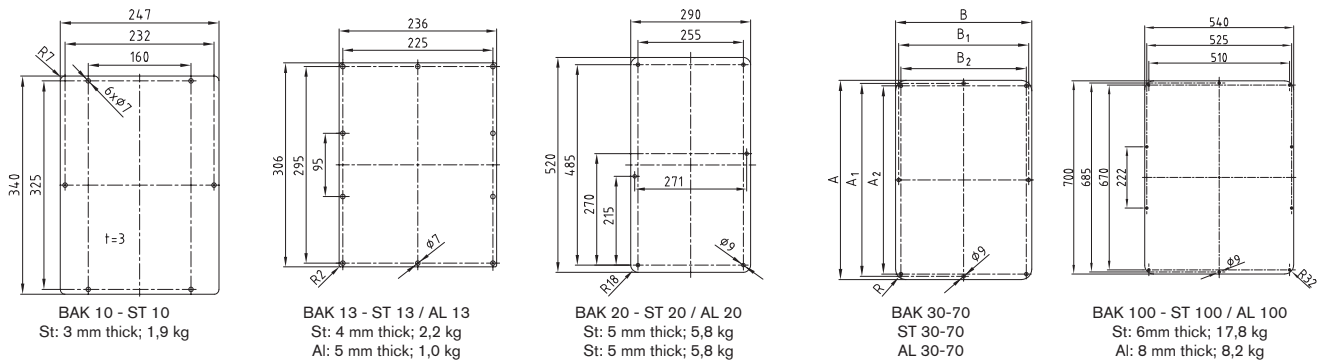


Effective volume	Gasket	Tightening torque of drain plug	Max. media temperature	Max. permissible pressure
63 L	RS 63/70 NBR	G1/2" = 80 Nm	100 °C	0,5 bar

BAK 100

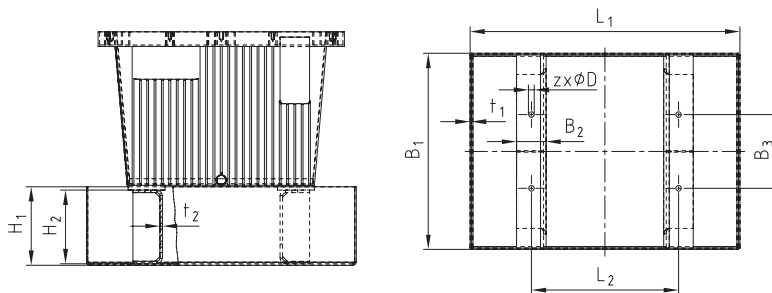


Effective volume	Gasket	Tightening torque of drain plug	Max. media temperature	Max. permissible pressure
95 L	RS 100 NBR	G1/2" = 80 Nm	100 °C	0,5 bar



Tank cover made of steel and aluminium, accessories for aluminium tank

Cover		For tank	Dimensions [mm]							Cover thickness		Weight [kg]	
Steel	Alu		A	A ₁	A ₂	B	B ₁	B ₂	R	St	Al	St	Al
ST 30	AL 30	BAK 30	475	460	449	325	310	299	25	5	5	6	2,1
ST 44	AL 44	BAK 40/BAK 44	515	500	485	415	400	385	32	5	8	8,5	4,6
ST 70	AL 70	BAK 63/BAK 70	605	590	575	465	450	435	32	5	8	10,5	6,1

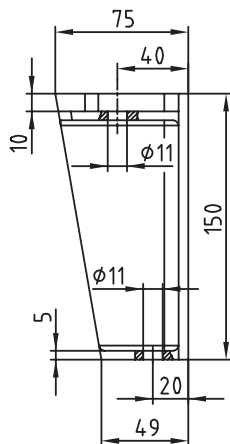


Oil sump BAKW made of steel for KTR aluminium tanks BAK/available acc. WHG

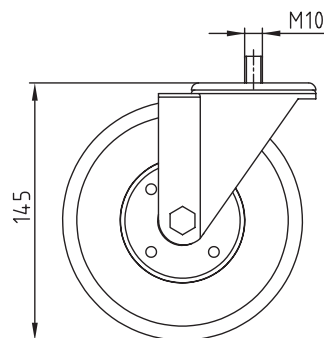
Oil sump pan	For tank	Volume of oil sump pan	Dimensions [mm]										
			L ₁	L ₂	B ₁	B ₂	B ₃	H ₁	H ₂	t ₁	t ₂	z	D
BAKW 13	BAK 13	11,8 l	380	188	310	60	118	110	100	3	3	4	9
BAKW 20	BAK 20	20 l	570	400	350	60	150	110	100	3	3	4	12
BAKW 30	BAK 30	33 l	550	300	400	60	150	160	150	3	5	4	12
BAKW 44	BAK40/BAK 44	45 l	600	341	500	60	241	160	150	3	5	4	12
BAKW 70	BAK 63/BAK 70	63,5 l	730	422,5	580	60	282,5	160	150	3	5	4	12
BAKW 100	BAK 100	104 l	920	497	770	60	337	160	150	3	5	4	12

Accessories

Tank feet BF 150 made of cast aluminium



Wheels LR 150 and LR 150 F with lock



Any questions? Please contact us.

Morskate Aandrijvingen BV
 Oosterveldsingel 47A
 7558 PJ Hengelo (Ov)
 The Netherlands

NL
 T +31 (0)74 - 760 11 11
 info@morskateaanrijvingen.nl
 www.morskateaanrijvingen.nl

DE
 T +49 692 - 222 34 95
 info@morskateantriebstechnik.de
 www.morskateantriebstechnik.de

EN
 T +31 (0)74 - 760 11 11
 info@morskatedrivetechnology.com
 www.morskatedrivetechnology.com